

SYNTHO-GLASS®

FIBERGLASS WATER-ACTIVATED COMPOSITE SOLUTION



Description

Syntho-Glass® is the original, patented fiberglass pre-impregnated composite that is activated by salt or freshwater. Packaged in a hermetically sealed foil pouch, it is ready to use and does not require any measuring or mixing. This system, when used with the appropriate primary patch, enables you to repair and reinforce virtually any diameter pipe in minutes. Syntho-Glass not only restores a pipe to its original psi rating, but actually can make the repair area stronger than the original pipe, plus it reduces downtime, saving you thousands in parts and labor. With an initial setting time of only 30 minutes (75°F/24°C), Syntho-Glass is excellent on copper, steel, SS, PVC, FRP, clay, concrete, rubber, and more. It is safe to use, nontoxic, noncombustible, and odorless. Syntho-Glass is a versatile solution for industries where quick-action repair can be critical.

Item #	Roll Size
SG520	2" x 5' (5.08cm x 1.524m)
SG930	3" x 9' (7.62cm x 2.743m)
SG415	4" x 15' (10.16cm x 4.572m)
SG430	4" x 30' (10.16cm x 9.144m)
SG450	4" x 50' (10.16cm x 15.24m)
SG830	8" x 30' (20.32cm x 9.144m)
SG850	8" x 50' (20.32cm x 15.24m)

Typical Applications

- Repairs pipes from 1/2 inch to 54 inches
- Emergency repair
- Cracked pipes
- Corroded pipes
- Irregular pipe fittings
- Force mains and gravity lines
- Underwater repair
- Splash zone
- Joint and tee repair
- Potable water lines

Benefits

- Ready to use
- Heat resistant
- Effective, time-saving
- No mixing and no mess
- Sets rock hard in minutes

Physical Properties

VOCs: None

Working Time: 5 Minutes at 75°F (24°C)

Initial Cure Time: 30 Minutes at 75°F (24°C)

Resin Type: Water-activated polyurethane

Resin Application:

Micro-controlled, Pre-impregnated

Service Temperature:

-50° to 250°F (-45° to 121°C)

Application Temperature:

32° to 150°F (-18° to 65°C)

Shelf Life: 24 Months

Mechanical Properties

Tensile Strength: 36,448 psi (2513.0 bar)

Flexural Strength: 26,100 psi (1799.53 bar)

Compressive Strength:

24,846 psi (1713.07 bar)

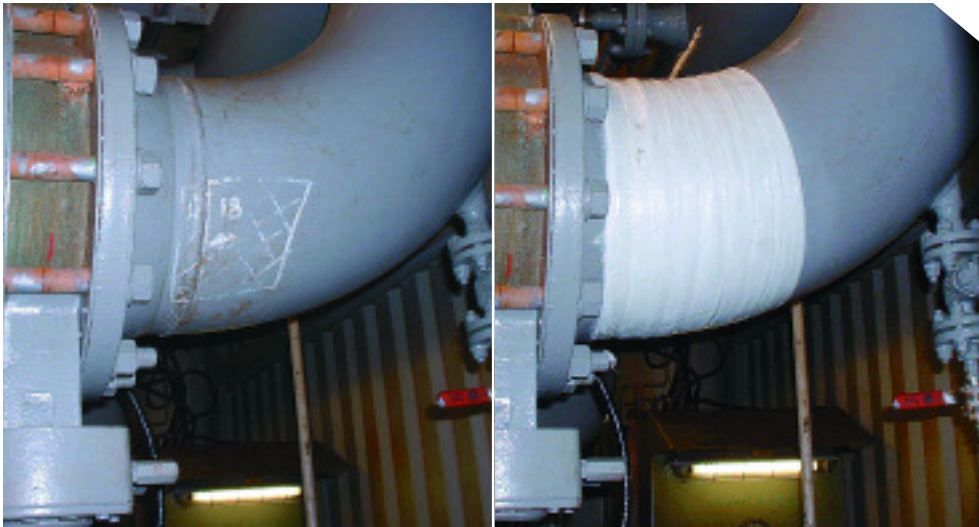
Dielectric Strength: 16,060 Volts

Temperature Resistance:

Continuous: 250F/121C

Intermittent: 300F/148C





Chemical Resistance

ASTM D 543, TEST PERIOD 2 MONTHS at 73°F (23°C)

Solution Tested	Product Result
Sulfuric Acid 50%	No Effect
Hydrochloric Acid 50%	No Effect
Sodium Hydroxide Solution 20%	No Effect
Gasoline	No Effect
Toluene	No Effect
Xylene	No Effect
Mineral Spirits	No Effect
Distilled Water	No Effect



Temperature vs. Setting Time

Average Temperature	Approximate Setting Time
95°F (35°C)	23 min.
70°F (21°C)	28 min.
60°F (16°C)	1 hr. 25 min.
50°F (10°C)	2 hrs. 42 min.
42°F (6°C)	3 hrs. 2 min.
35°F (2°C)	6 hrs. 21 min.



©Neptune Research Inc. (NRI). Syntho-Glass® is a registered trademark of NRI. NRI utilizes a process of continuous product improvement for all of our products. While we do strictly adhere to our products' specifications, we routinely implement product improvements. Therefore, please contact your local NRI distributor or office for the most current product specifications. NRI warrants the quality of this product when used according to directions. Syntho-Glass is NOT an approved coating system. Failing to coat per standard procedures can lead to atmospheric corrosion damage. Apply protective coatings per company standards. User shall determine suitability of product for use and assumes all risk. The seller will not accept liability for more than product replacement. SGDS 0410

NRI
Innovative Composite Solutions