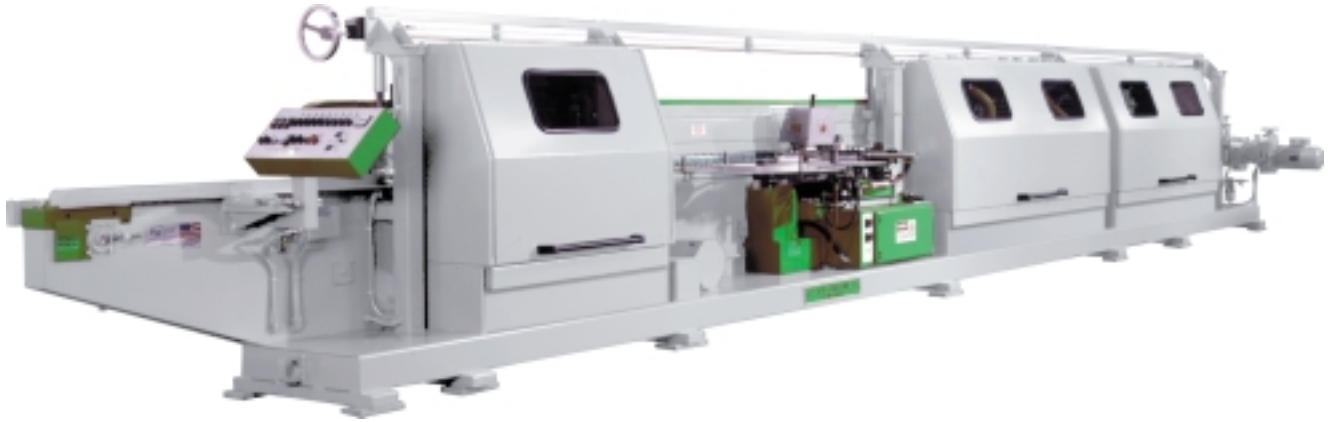


Fletcher FM45 Edgebander



Banding Station

Accepts coil, strips
3mm PVC and lumber

Minimum Edge: 3 1/2"

Maximum Part Thickness: 2 1/8"

Standard Band: .020 (up to 1/2" thick)

Optional Lumber Banding (up to 1-1/8" thick)

Minimum Parts Spacing: 20"



Jump Pre-Mill & Pre-Mill Station

For minimizing appearance of glue lines. 5 HP high speed direct drive

Feed Rates: 65 fpm

Optional Automatic Second Coil

Optional Quick Change Glue Pot

Optional Automatic Setup



End Trimmer Station

High speed end trim saw with optional automatic tilting



Scraper Station

Uses insert tooling to remove knife marks from 3mm PVC banding



Top & Bottom Trimmer Station

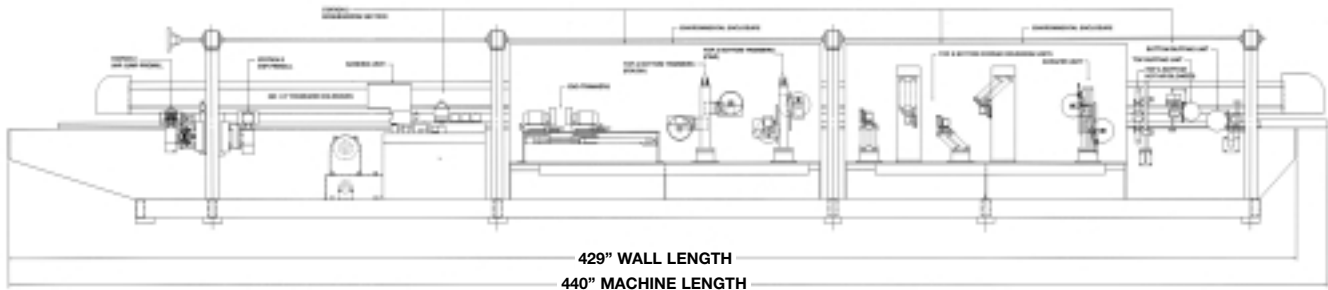
2.5 HP high speed rough trim, 1.0 HP high speed fine trim. Trimmers float vertically and horizontally



Buffer Station

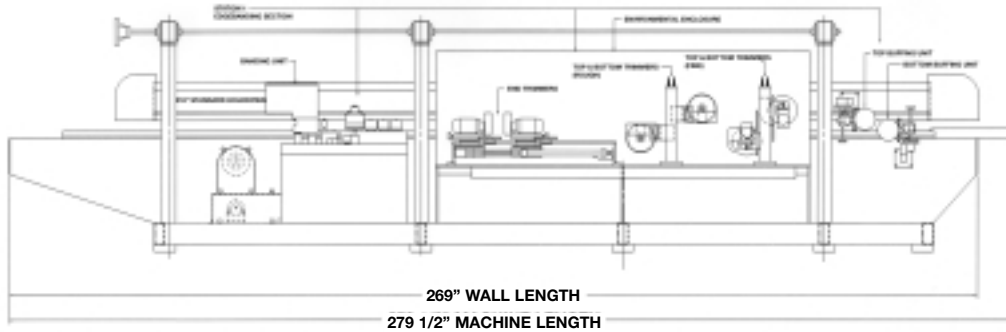
With optional oscillation both buffers tilt

Fletcher FM45-S Edgebander



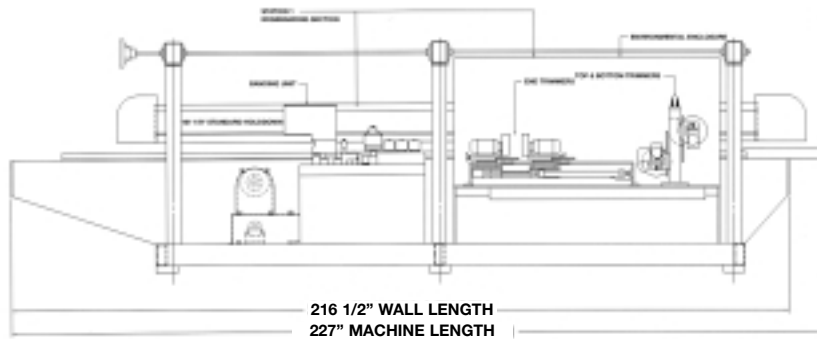
Features:

- Pre-Milling
- Universal Banding
- End Trim
- Top & Bottom Trim
- Corner Rounding
- Scraping
- Heating & Buffing



Features:

- Universal Banding
- End Trim
- Top & Bottom Trim
- Buffing



Features:

- Universal Banding
- End Trim
- Top & Bottom Trim



Fletcher Machine Co.

4305 East U.S. Highway 64 • Lexington, North Carolina 27292
Phone: (336) 249-6101 • www.fletchermachine.com • Fax: (336) 249-6890