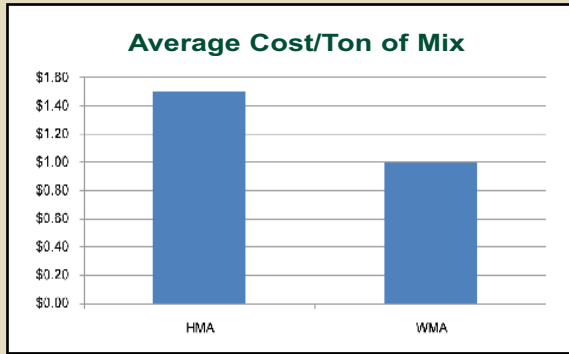


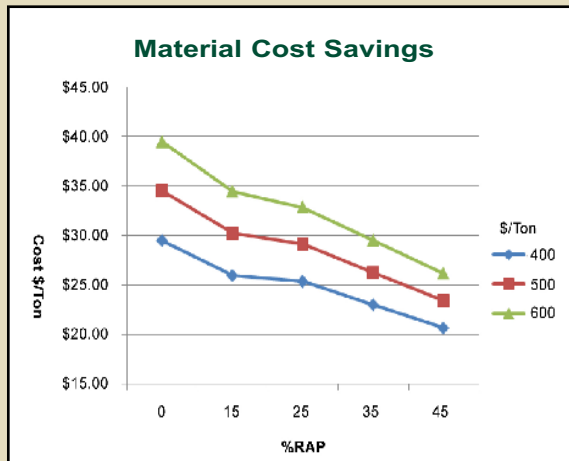
**Cost Benefits**

**ENERGY SAVINGS**



Energy Savings up to 35%

**SAVING USING RAP**



Higher RAP levels can be used with Advera WMA. In addition, some states are allowing no binder change after 25% RAP with warm mix asphalt. Check with your local agencies.

Advera WMA also improves hand work and compaction with Recycled Asphalt Shingles (RAS)

These materials are provided for the information of the recipient only and nothing contained herein shall constitute a representation or warranty of any kind by PQ Corporation. The recipient cannot rely on the information set forth herein for any reason, and any such reliance shall be at the recipients sole risk

***“TIME RELEASED Foaming Technology = Proven Performance, Density Bonuses, HIGH-EST Fuel Savings, Longest Haul Times, and TRUE Cold Weather Paving Workability”***

**Working with  
PQ Corporation**

**MIX DESIGN**

No one wants to produce a mix in the dark. We know you want the ability to test warm mix asphalt in your laboratory, so we can supply samples, material and technical assistance.

**DEMONSTRATIONS**

PQ Corporation realizes time and money are important to you. So we supply a Project Cost Option which supplies equipment, engineering support and material in one price.

**EQUIPMENT**

PQ Corporation is working with Krendl Machine Company to bring you equipment options.

- Rentals
- Lease to buy
- Portable and Stationery Designs
- Engineering Support to tailor the equipment to your plant Requirements

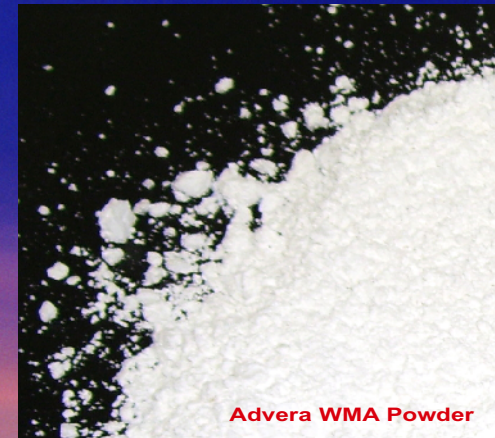
For more information contact us at:

**USA 1800-944-7411  
Canada 416-255-7771**

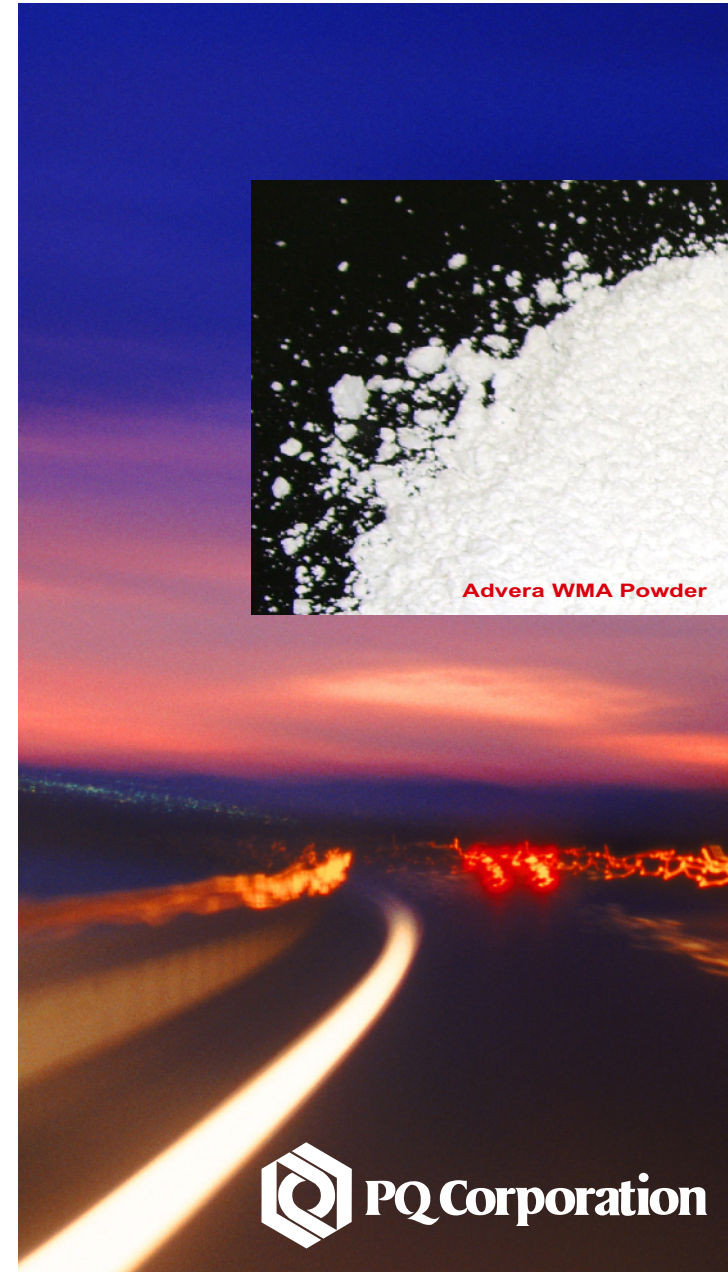
Or visit our new website at:

[www.adverawma.com](http://www.adverawma.com)

[www.pqcorp.com](http://www.pqcorp.com)



Advera WMA Powder





## PAVING COMPANIES

- Extending the Paving Season
- Compaction Aid for Stiff Mixes - Density Bonuses
- Longer Workability  
*Longer Hauls*  
*Less Scrap*  
*Easier Hand Work*
- Less Emissions at Paver
- Cooler working conditions (50-100° F cooler)



## Benefits of Advera WMA

### AGENCIES

- Reduce Emissions (VOC and CO<sub>2</sub> up to 60% reduction)
- More Consistent Densities
- Faster Opening to Traffic
- Night Paving / Cool Temperature Paving

### ASPHALT PLANT OWNERS

- Increase in use of RAP (up to 55%)
- Energy Savings (up to 35%)
- Compaction Aid for Stiff Mixes - Density Bonuses
- Extending Paving Season/Cold Weather Paving
- Long Hauls (over 3 Hours)
- Increased Production rates
- Paving over Crack Sealing

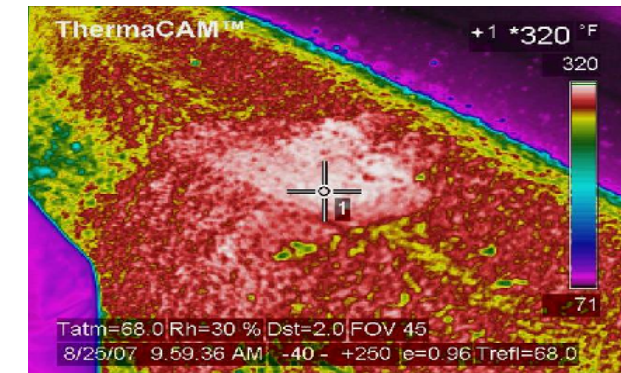
*“Your Warm Mix Asphalt was consistently processed at 240-250° F and the hand work was just as easy as hot mix asphalt.”*

## Why Advera WMA?

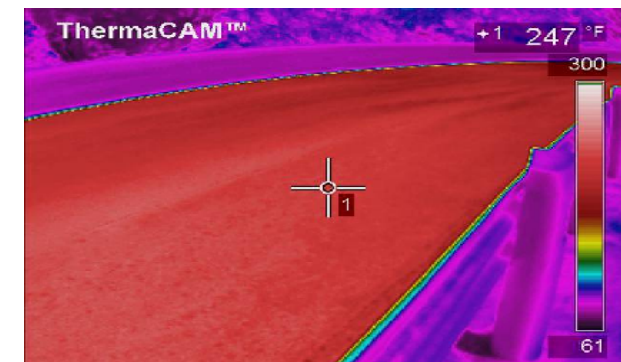
- Time-released moisture for longer workability
- No Change to the PG Grade of the Binder
- No measurable changes to Volumetrics
- Flexibility in dosage
- Lower production temperatures
- Mix design can be tested in the laboratory
- Made in the USA

## Densities Bonuses

- More consistent densities with Advera WMA



## HMA



## Advera WMA