

New chain qualities

25 cG → Economy (ECO)

- improved heat treatment
- reduced surface pressure
- up to 15 % better performance



40 cG → Advantage (ADV)

- improved heat treatment
- reduced surface pressure
- up to 15 % better performance



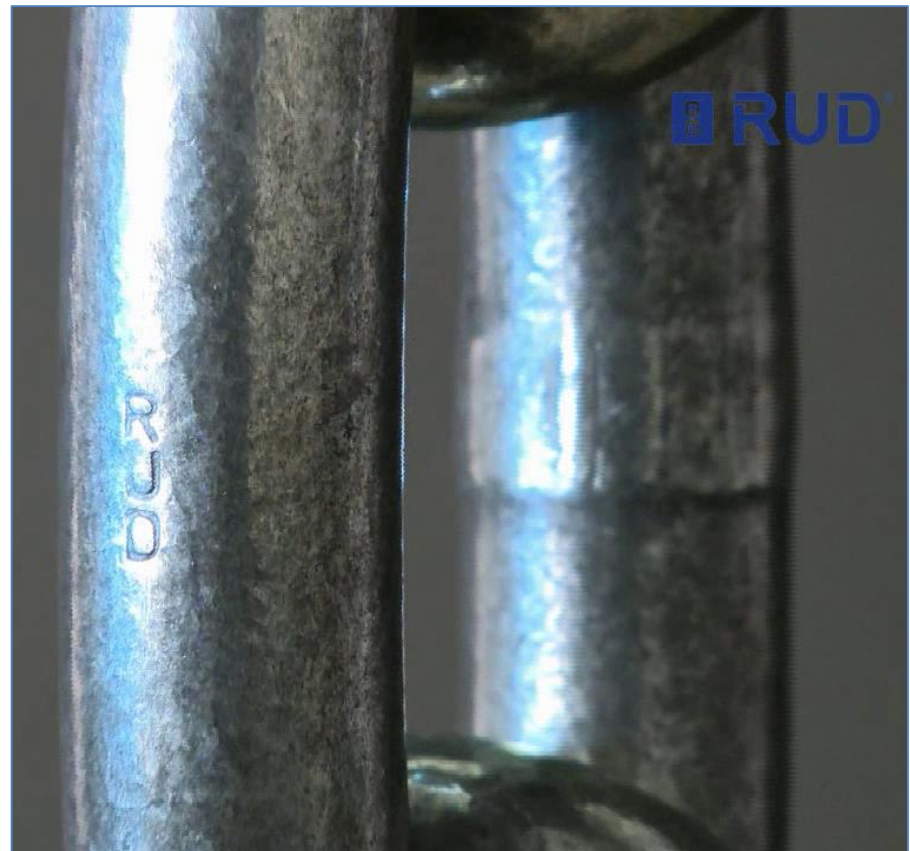
Super35 → Premium (PRE)

- new PRE quality has better features compared to Super 35 standard
 - a) improved surface hardness
 - b) higher case hardening depth
 - c) reduced surface pressure
- up to 30 % better performance

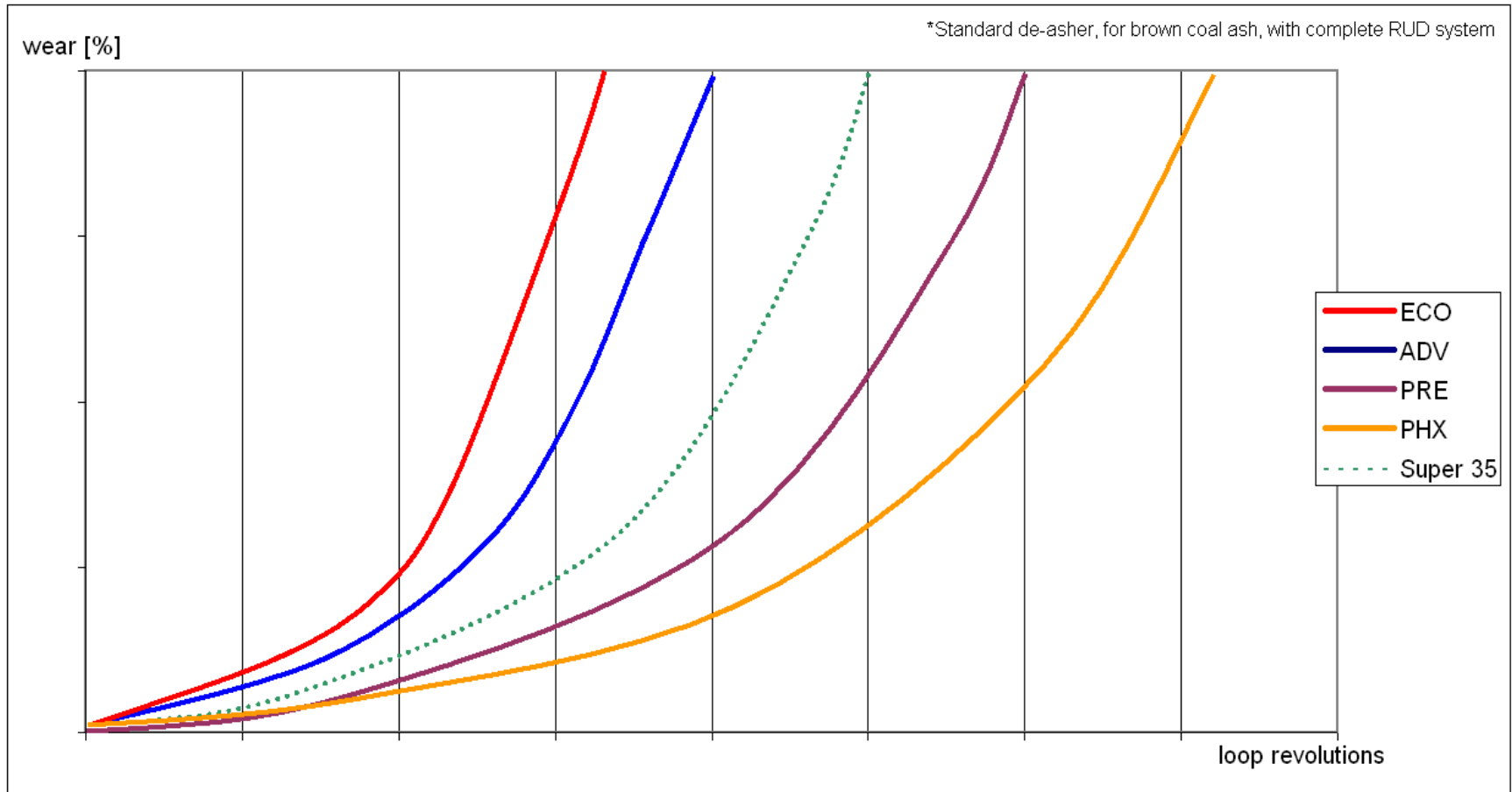


New chain quality Phoenix (PHX)

- new PHX quality has better features compared to PRE
 - a) improved surface hardeness
 - b) higher case hardening depth
 - c) more reduced surface pressure
 - d) optimized surface layer
 - e) better heat resistance
- up to 30 % better performance



Performance comparison - presumption



Performance comparison - proof

Conditions:

- coal-fired power station
- hard coal
- very harsh / abrasively conditions

